

# IMPRESSA Xs9 Classic

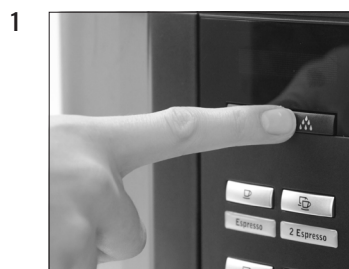
## Remplacement du filtre

Matériel nécessaire:  
**Cartouche filtrante CLARIS White**  
 Paquet de 4 (Art. 62911)

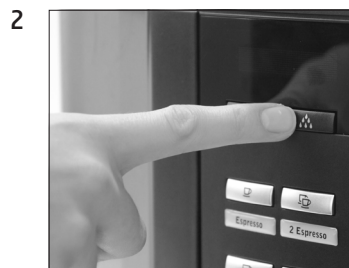


Ce mode d'emploi abrégé ne remplace pas le « Le livre de l'IMPRESSA Xs95/Xs90 One Touch et Xs9 One Touch Classic ». Tout d'abord, veuillez lire et respecter impérativement les consignes de sécurité et mise en garde afin d'éviter tous dangers.

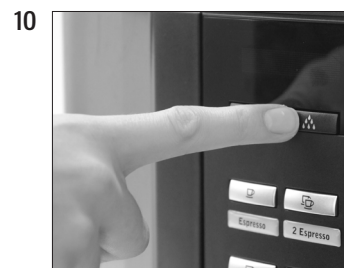
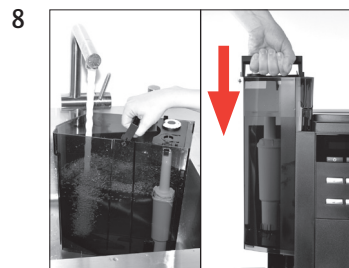
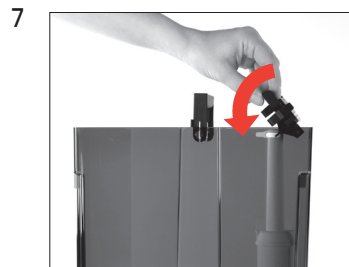
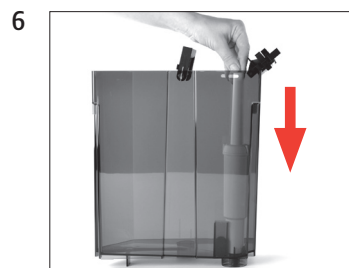
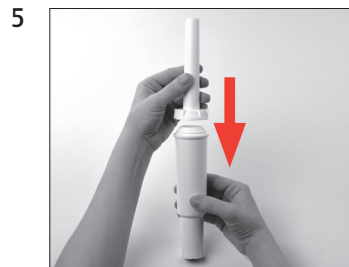
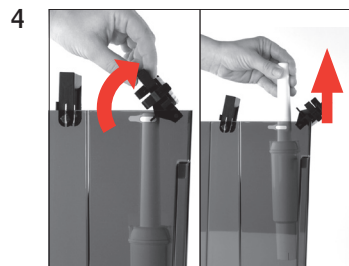
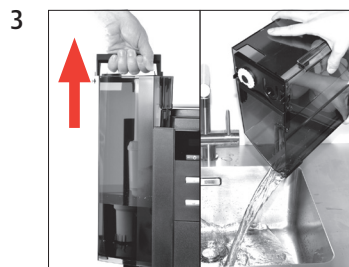
Condition : CHOISIR PRODUIT /  
 CHANGER FILTRE



DUREE ENV. 2 MIN /  
 ALLUMER OUI



CHANGER FILTRE /  
 PRESSER ENTRETIEN



FILTRE RINCE  
 CHOISIR PRODUIT